



Wallowa-Whitman National Forest

Wallowa Mountains Visitor Center
201 East 2nd Street P.O. Box 905
Joseph, OR 97846
(541) 426-5546
www.fs.usda.gov/wallowa-whitman

Eagle Cap Wilderness

LITTLE MINAM RIVER #1908 to #1673 to #1919 to #1918 to #1942

TRAIL BEGINNING:

Moss Spring Trailhead

TRAIL ENDING:

Moss Spring Trailhead

ACCESS:

Take State Highway #237 from Island City 12 miles to Cove. Take Forest Road #6220 from Cove (sign says Moss Springs Campground Trailhead) 8.2 miles. This road is very steep.

ATTRACTIONS:

You will travel through dense forested land, following the winding Little Minam and Minam Rivers. Dispersed camping sites are plentiful. You will find some good fishing spots along the way and observe the historic Horse Ranch along this route.

CONSIDERATIONS:

Northwest Forest Passes are required at Moss Springs Trailhead.

There is parking at the trailhead with stock loading ramp and hitch rails. Vault toilets are available. There are signs at the trailhead, boundaries and junctions. Watch for bears in this area, especially in late August and September. There is water along the entire route for stock, but carrying your own drinking water is recommended.

Wallowa-Whitman National Forest: Email: r6_ww_web_correspondence@fs.fed.us
Eagle Cap/Hells Canyon NRA/Wallowa Valley Ranger District in Joseph, OR: 541-426-5546, 541-426-4978
Hells Canyon NRA in Clarkston, WA: 509-758-0616; **Riggins, ID:** 208-628-3916
Hells Canyon Boat Launch: 541-785-3395
La Grande Ranger District: 541-963-7186
Whitman Ranger District in Baker City, OR: 541-523-6391; **Halfway, OR:** 541-742-7511

Length: 27.7 miles round trip

Restrictions: See Eagle Cap Wilderness Regulations

Distance to junction points:

Trail #1673 7.5 miles

Trail #1919 5.8 miles

Trail #1918 5.5 miles

Trail #1942 1.1 miles

Recommended Season: Summer and fall

Use: Heavy use in summer and fall (horses and hikers)

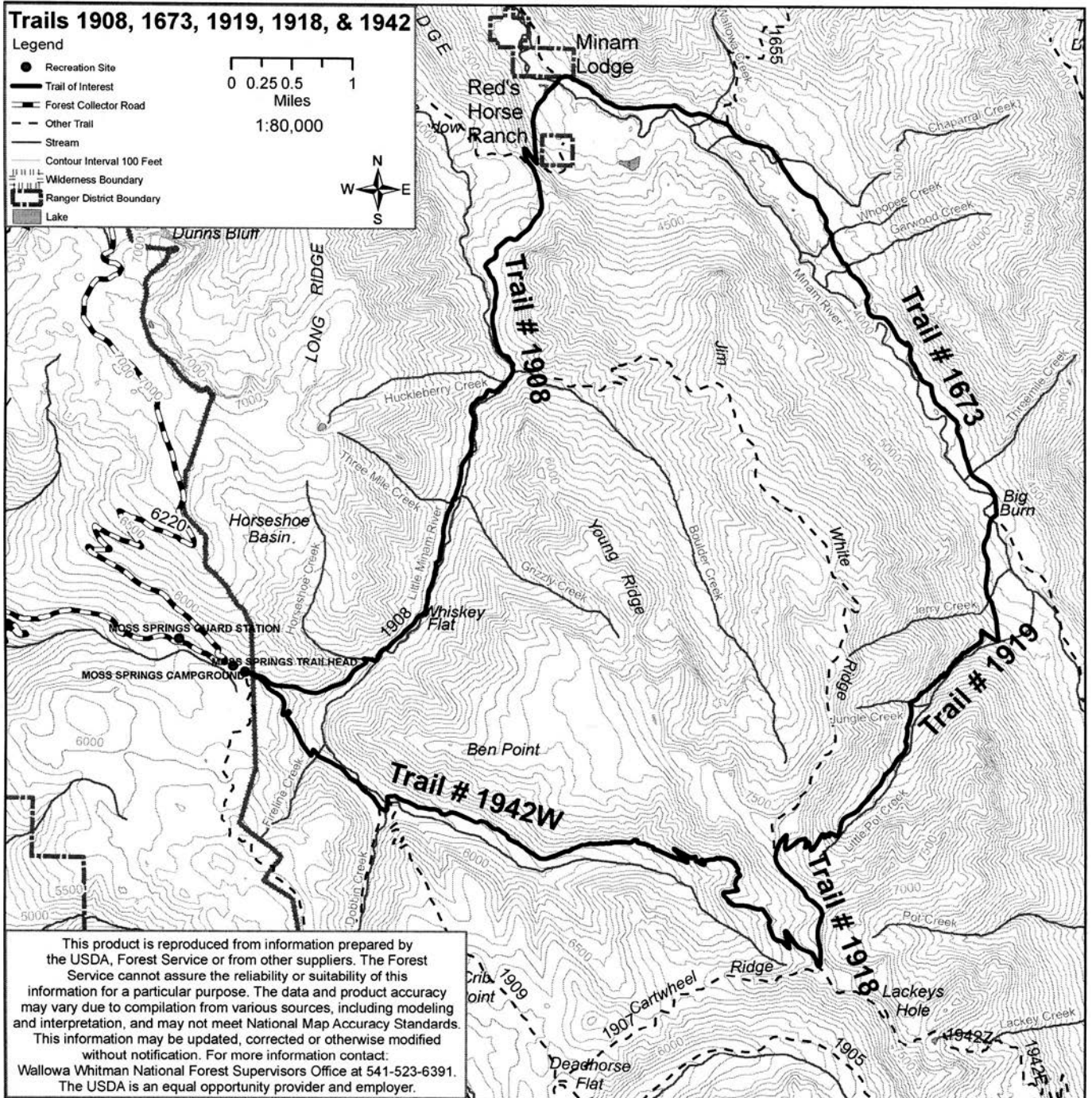
Difficulty: Easy to most difficult

Elevation:

Trailhead 5,842'

Big Burn 4,147'

Junction w/trail #1918 7,678'



Please refer to National Forest map for complete trail system.